

**DETLEF ORLOPP**

**IM LICHT DES GLETSCHERS**  
**28. MÄRZ – 24. MAI 2014**



## DETLEF ORLOPP »IM LICHT DES GLETSCHERS«

Er schwieg einen Augenblick. Lauschte der Wüstenstille. Einem Labyrinth aus Stille. Hob den Kopf zum rätselhaften Mond, zu den majestätischen Platten auf den Gipfeln des Ídenan, dessen geheimnisvolle Majestät durch das Licht des Mondes noch verstärkt wurde. „Das allein schon genügt. Die Schönheit des Vollmonds und das rätselhafte Licht des Berges. Diese Stille. Lausche doch dieser Stille, du Tor. Genügt denn das alles nicht als Grund zum Leben? Genügt dir das nicht als Rechtfertigung, glücklich zu sein ...?“ Ibrahim al-Koni, Die Magier, 2001

Eine Eigenschaft der Fotografien Detlef Orlopps scheint darin zu bestehen, dass sich ihnen nur schwerlich Eigenschaften zuschreiben lassen. Seinen detailvollen, bildfüllenden Berg- oder Seelandschaften mit ihrem hohen Horizont fehlt jeder Hinweis auf menschliche Gegenwart. Diskret und zurückhaltend registriert er strukturelle Ereignisse zwischen Schwarz und Weiß, in denen sich romantische Erfahrungen des Erhabenen verdichten und auf ursprünglich Irdisches verweisen. Detlef Orlopp nimmt eine Perspektive ein, die eine Hierarchie von Bedeutung geradezu ausschließt. Es entsteht „eine fast gleichmäßig zu nennende Zeichenstruktur, die vom Licht erzeugt wird, das jede Bodenerhebung mit einem Schlagschatten versieht“ (Peter Weiermair). In der Distanziertheit, die jeder Einmischung entsagt, liegt eine Leere und Ruhe, die diese Konkrete Fotografie mit einer Transzendenz in Verbindung bringt, die von jedem Glauben entbunden ist. Neben seiner Landschaftsfotografie portraitiert Detlef Orlopp seit den 60er Jahren auch Menschen. Wie die Natur sich von konkreten topografischen Orten zu Zeichen der Landschaft entwickelt, so scheinen auch seine Portraits jenen zugleich distanzieren und doch die Nähe aufspürenden Blick zu spiegeln und die konkreten Personen zu Zeichen des Menschseins werden zu lassen. Die Ausstellung schließt Orlopps Portraitserie zu Max Bense ein, der bereits 1967 Fotografien von Detlef Orlopp in der von ihm geleiteten Studiengalerie der Technischen Hochschule Stuttgart zeigte.

Detlef Orlopp, geb. 1937 in Elbing/Westpreußen, studierte an der Staatlichen Höheren Fachschule für Photographie in Köln und der Staatlichen Schule für Kunst und Handwerk in Saarbrücken bei Otto Steinert, dem er 1959 an die Folkwangschule in Essen folgte. 1961 erhielt er einen Lehrauftrag an der Werkkunstschule in Krefeld, an die Orlopp 1973 bis zu seiner Emeritierung zum Professor für Fotografie und Film berufen wurde. Im Zuge des Ankaufs des fotografischen Werks von Detlef Orlopp widmet ihm das Museum Folkwang Essen 2015 eine umfangreiche Retrospektive.

## DETLEF ORLOPP »IN THE LIGHT OF THE GLACIER«

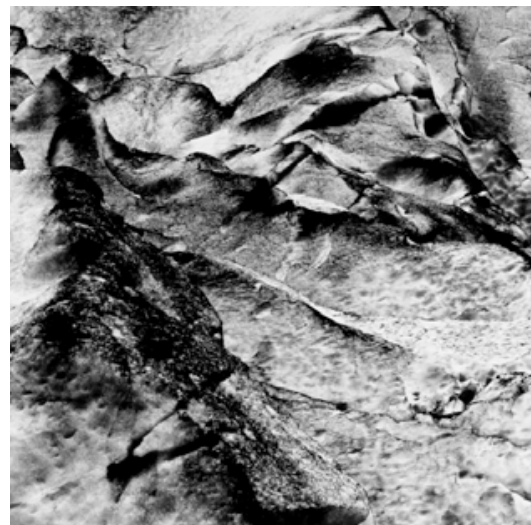
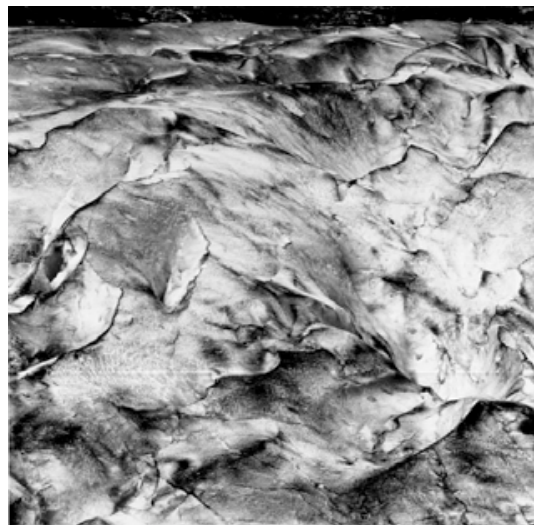
He was silent for a moment. Listened to the silence of the desert – a labyrinth of silence. He lifted his head up to the mysterious moon and the imposing peaks of the Ídenan mountain, its mysterious majestic nature enhanced by the light of the moon. “That alone was enough. The beauty of the full moon and the enigmatic light of the mountain. This silence. Listen to this silence, you fool. Is all this not enough of a reason for being alive? Is this not justification enough for being happy ...?” (Ibrahim al-Koni, The Animists, 2001)

A central characteristic of Detlef Orlopp’s photographs seems to be that they are difficult to describe. Featuring mountains or lakes, his landscapes are full of details that take up the entire picture; with their horizon elevated, they lack any form of human presence. In a discrete and reserved way, the photographer registers structural occurrences between black and white, in which romantic experiences of the sublime intensify and refer to something primal and earthly.

Detlef Orlopp captures a perspective that categorically excludes a hierarchy of meaning. The result is “an almost consistently smooth structure of signs produced by the light, which gives every contour on the ground a hard shadow” (Peter Weiermair). In the aloofness that renounces any kind of intervention, there is a void and calmness associating Orlopp’s concrete photography with a transcendence completely disengaged from faith.

Alongside his landscape photography, Detlef Orlopp has also been taking portraits of people since the 1960s. In the same way that nature develops concrete topographic sites into signs of landscape, so too do his portraits reflect a distanced perspective that still seeks a sense of proximity, turning concrete individuals into signs of humanity. The exhibition of Orlopp’s portraits draws an arch to Max Bense, who had already exhibited photographs by Detlef Orlopp in the faculty gallery that he headed at the Technische Hochschule Stuttgart in 1967.

Detlef Orlopp (born in 1937 in Elbing/West Prussia) studied at the Staatliche Höhere Fachschule für Photographie in Cologne and the Staatliche Schule für Kunst und Handwerk in Saarbrücken under Otto Steinert, whom he followed to the Folkwangschule in Essen in 1959. Two years later, he received a teaching assignment at the Werkkunstschule in Krefeld, where Orlopp was appointed Professor for Photography and Film in 1973 and where he worked until his retirement. In line with the acquisition of Detlef Orlopp’s photographic work, Museum Folkwang Essen will be devoting a comprehensive retrospective to the artist in 2015.



**Detlef Orlopp**  
**3.9.95**

6 b/w photographs  
under passepartout  
bromide silver gelatin  
image size each 44,2 x 44,7 cm  
framed size each 81,5 x 80 cm  
Edition of 1 + 1 AP  
Vintage

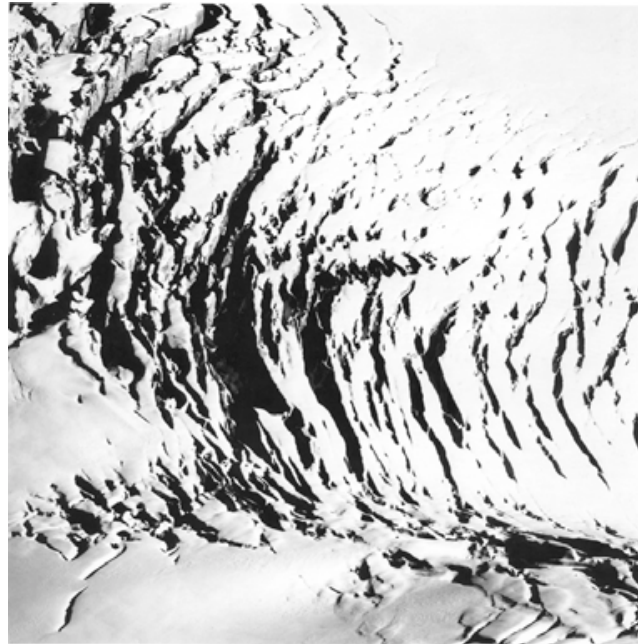
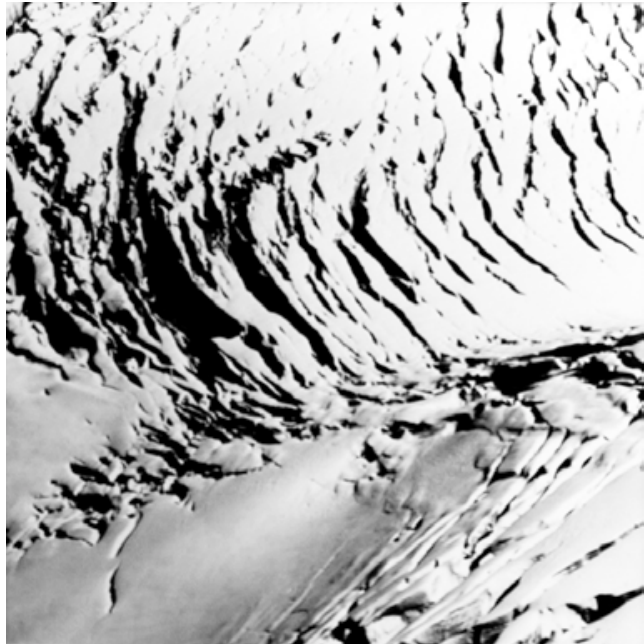


**Detlef Orlopp**  
**Im Licht des Gletschers**  
Installation view Parrotta Contemporary Art Stuttgart, 2014



**Detlef Orlopp**  
19.8.95

2 b/w photographs under passepartout  
bromide silver gelatin  
image size each 44,2 x 44,2 cm  
framed size each 81,5 x 80 cm  
Edition of 1 + 1 AP  
Vintage

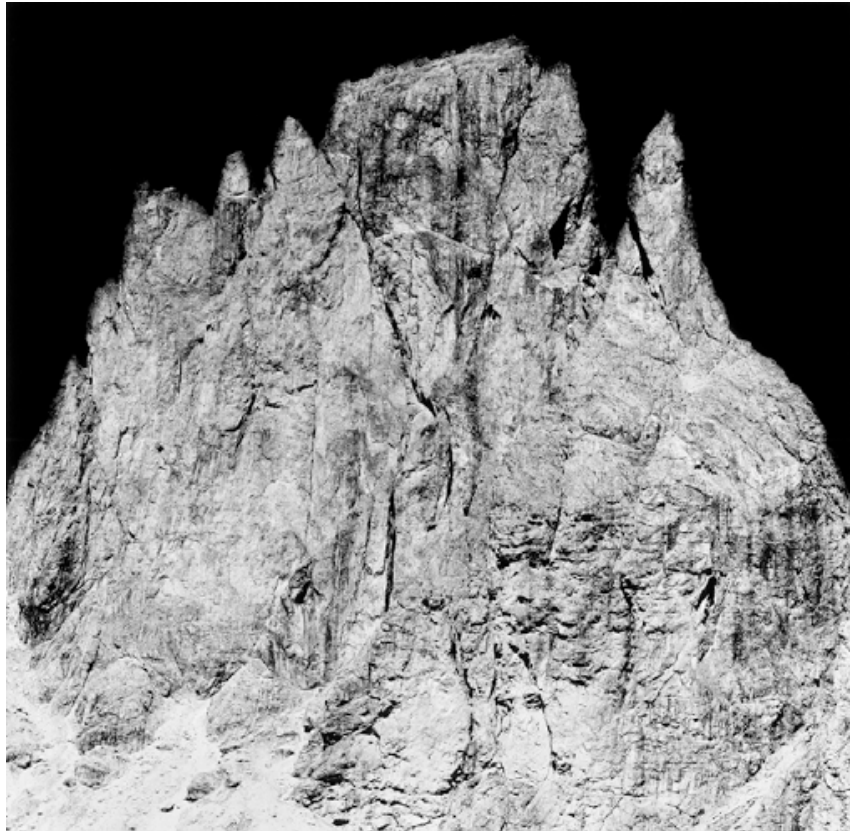


**Detlef Orlopp**  
31.8.79

3 b/w photographs under passepartout  
bromide silver gelatin  
image size each 44,8 x 44,8 cm  
framed size each 81,5 x 80 cm  
Edition of 1 + 1 AP  
Vintage



**Detlef Orlopp**  
**Im Licht des Gletschers**  
Installation view Parrotta Contemporary Art Stuttgart, 2014



**Detlef Orlopp**  
28.8.93

b/w photograph under passepartout  
bromide silver gelatin  
image size 44,8 x 44,8 cm  
framed size 81,5 x 80 cm  
Edition of 1 + 1 AP  
Vintage





**Detlef Orlopp**  
**24.9.2006**

3 b/w photographs under passepartout  
bromide silver gelatin  
image size 45,3 x 43,9 / 44,3 x 45,6 cm / 45,3 x 44,2 cm  
sheet size each 60,5 x 50,6 cm  
framed size each 82,8 x 82,8 cm  
Edition of 1 + 1 AP  
Vintage

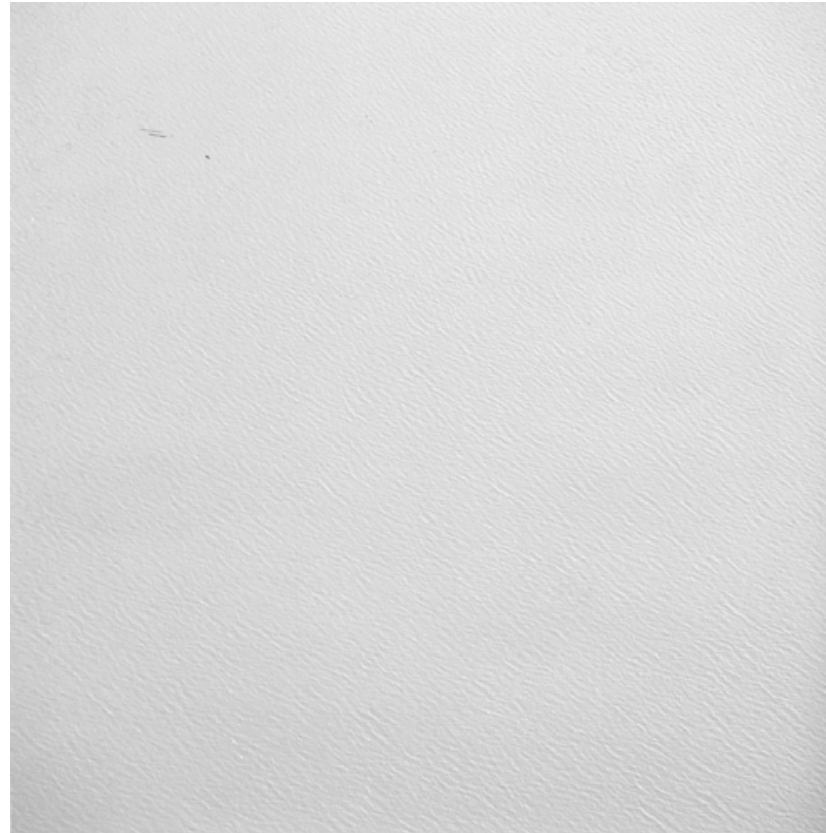


**Detlef Orlopp**  
**Im Licht des Gletschers**  
Installation view Parrotta Contemporary Art Stuttgart, 2014



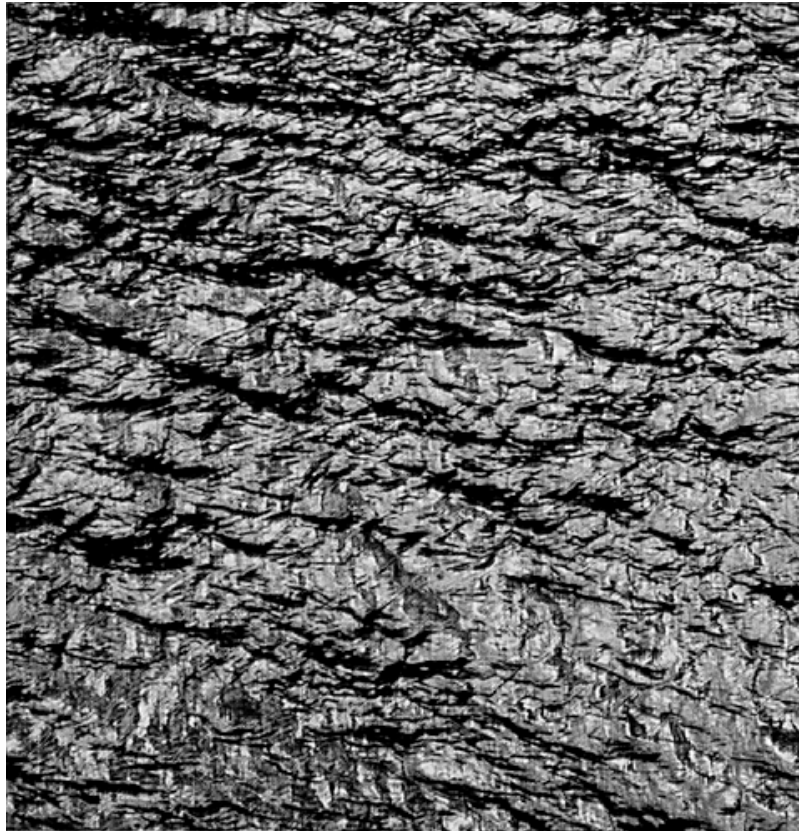
**Detlef Orlopp**  
27.9.2003

b/w photograph under passepartout, bromide silver gelatin  
image size 44,2 x 45,2 cm  
sheet size 60,6 x 50,6 cm  
framed size 82,8 x 82,8 cm  
Edition of 1 + 1 AP  
Vintage



**Detlef Orlopp**  
**19.8.95**

2 b/w photographs under passepartout, bromide silver gelatin  
image size 45,1 x 44,2 cm / 45 x 44,2 cm  
sheet size each 60,5 x 50,6 cm  
framed size each 82,8 x 82,8 cm  
Edition of 1 + 1 AP  
Vintage



**Detlef Orlopp**  
18.9.92

2 b/w photographs under passepartout, bromide silver gelatin  
image size each 42,8 x 44,2 cm  
sheet size each 60,6 x 50,7 cm  
framed size each 82,8 x 82,8 cm  
Edition of 1 + 1 AP  
Vintage



**Detlef Orlopp**  
19.8.76

b/w photograph, bromide silver gelatin  
image size 47,6 x 48,5 cm  
sheet size 49 x 48,8 cm  
framed size 65 x 65 cm  
Edition of 1 + 1 AP  
Vintage



**Detlef Orlopp**  
7.9.2005

b/w photograph under passepartout, bromide silver gelatin  
image size 45,3 x 44,4 cm  
framed size 84 x 83 cm  
Edition of 2 + 1 AP  
Vintage



**Detlef Orlopp**  
**30.8.86**

b/w photograph under passepartout, bromide silver gelatin  
image size 45,3 x 43,8 cm  
sheet size 60,7 x 50,7 cm  
framed size 82,8 x 82,8 cm  
Edition of 1 + 1 AP  
Vintage





**Detlef Orlopp**  
4.9.97

b/w photograph under passepartout, bromide silver gelatin  
image size 45,8 x 44,4 cm  
sheet size 60,7 x 50,7 cm  
framed size 82,8 x 82,8 cm  
Edition of 1 + 1 AP  
Vintage

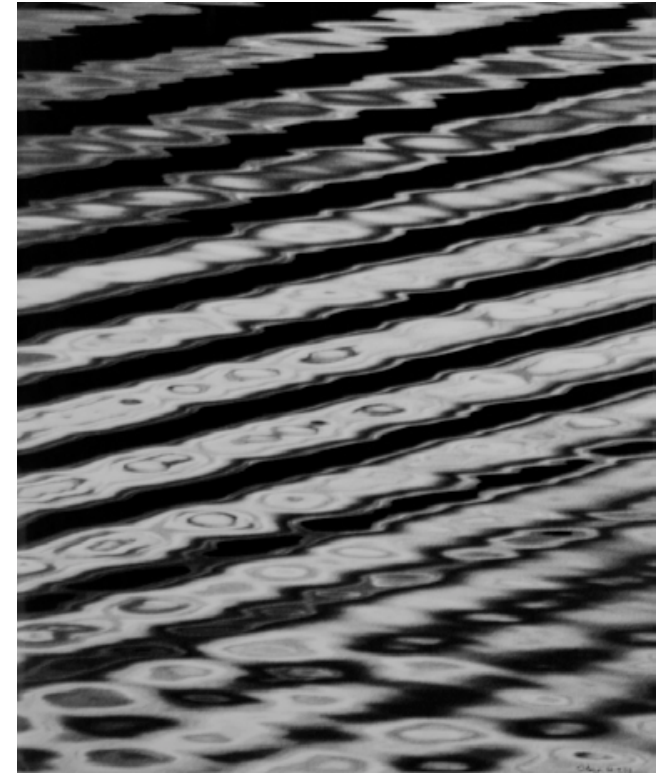


**Detlef Orlopp**  
**Im Licht des Gletschers**  
Installation view Parrotta Contemporary Art Stuttgart, 2014



**Detlef Orlopp**  
4.9.82

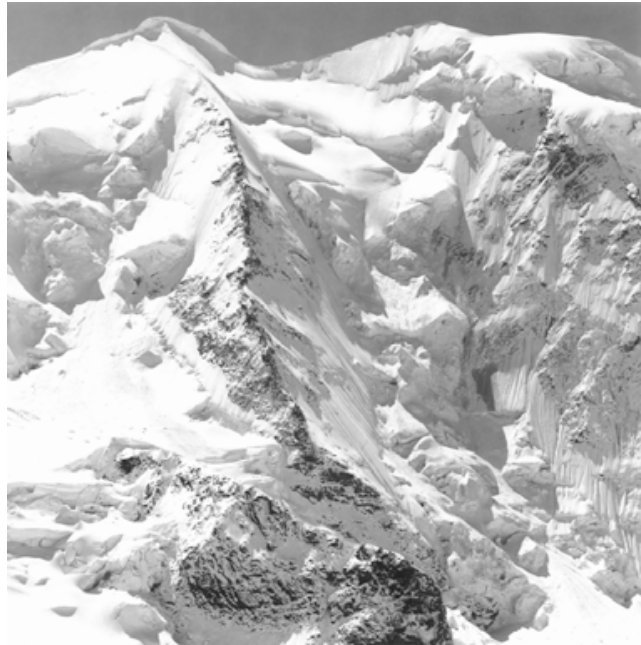
2 b/w photographs, bromide silver gelatin  
image size 26,4 x 25,9 cm / 25,5 x 25,3 cm  
sheet size each 40 x 32,5 cm  
framed size each 52,2 x 42 cm  
Edition of 2 + 1 AP  
Vintage



**Detlef Orlopp**  
26.9.02

3 b/w photographs, bromide silver gelatin  
image / sheet size each 59,3 x 49,8 cm  
framed size each 65,3 x 65 cm  
Edition of 2 + 1 AP  
Vintage

**PARROTTA  
CONTEMPORARY  
ART**

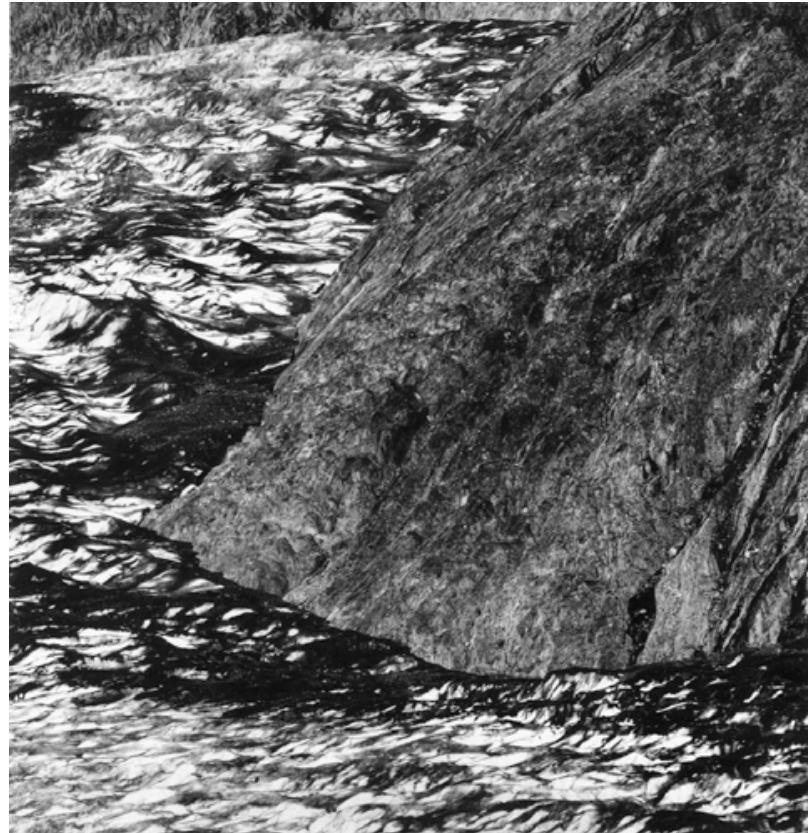
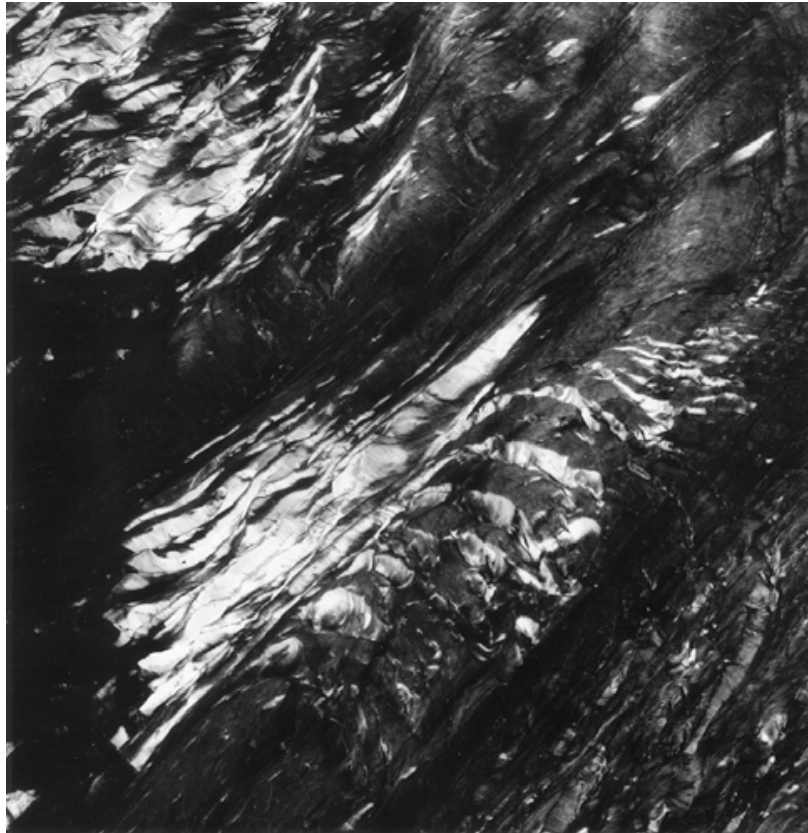


**Detlef Orlopp**  
25.8.79

3 b/w photographs, bromide silver gelatin  
image size 26,1 x 26,5 cm / 26,4 x 26,4 cm / 26,6 x 26,4 cm  
sheet size each 40 x 32,5 cm  
framed size each 52,2 x 42 cm  
Edition of 2 + 1 AP  
Vintage



**Detlef Orlopp**  
**Im Licht des Gletschers**  
Installation view Parrotta Contemporary Art Stuttgart, 2014



**Detlef Orlopp**  
24.9.2013

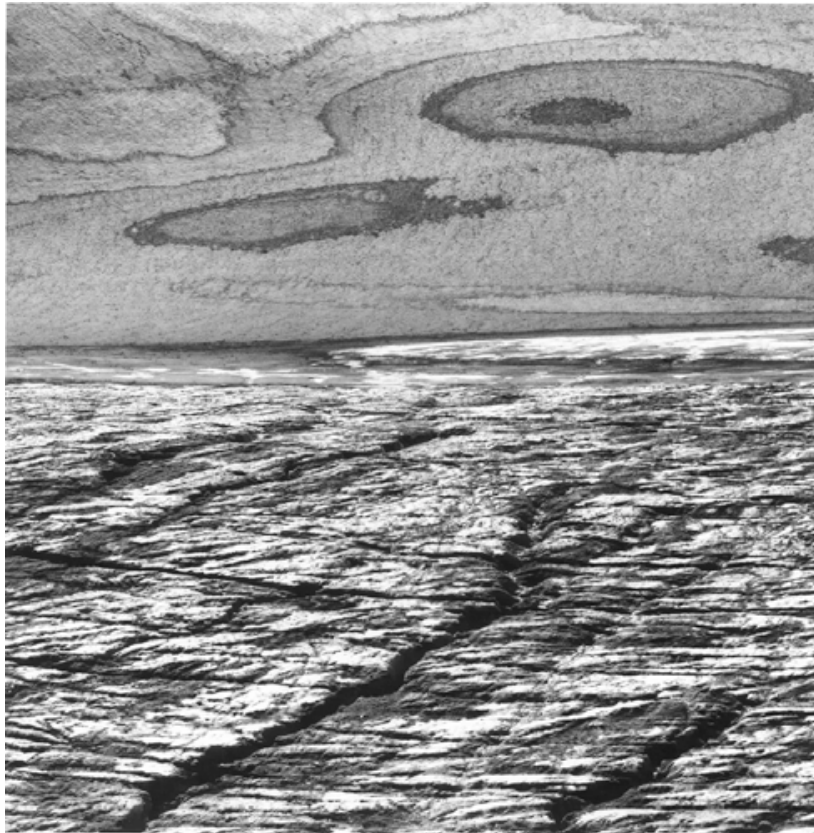
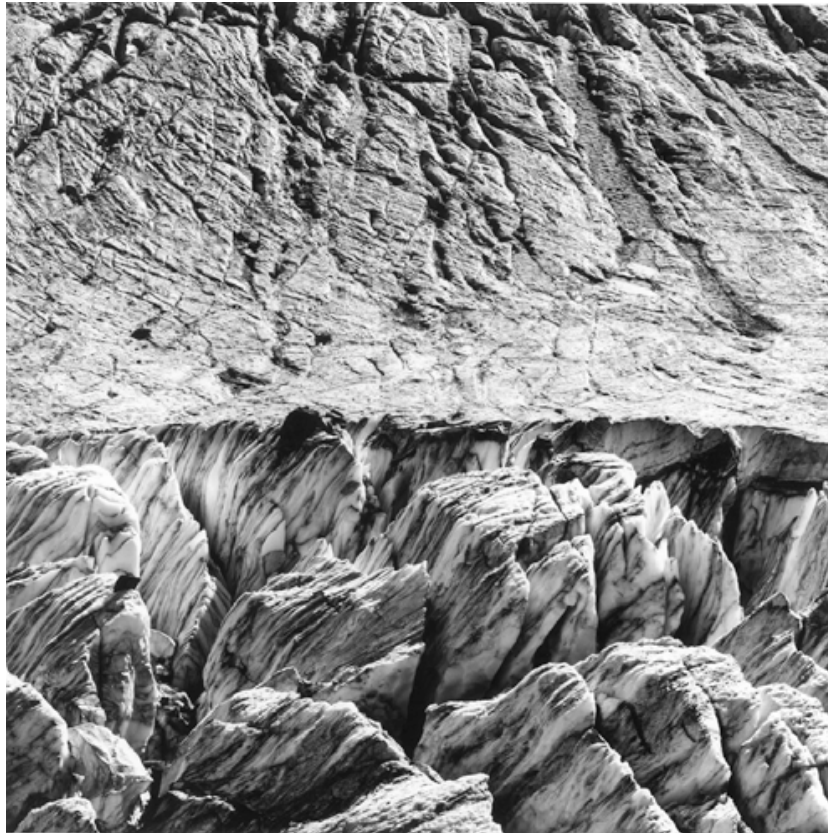
2 b/w photographs, bromide silver gelatin  
image size each 27,8 x 27 cm  
sheet size 39,6 x 29,6 cm / 40 x 32,5 cm  
framed size each 52,2 x 42 cm  
Edition of 2 + 1 AP  
Vintage



**Detlef Orlopp**  
**3.8.78**

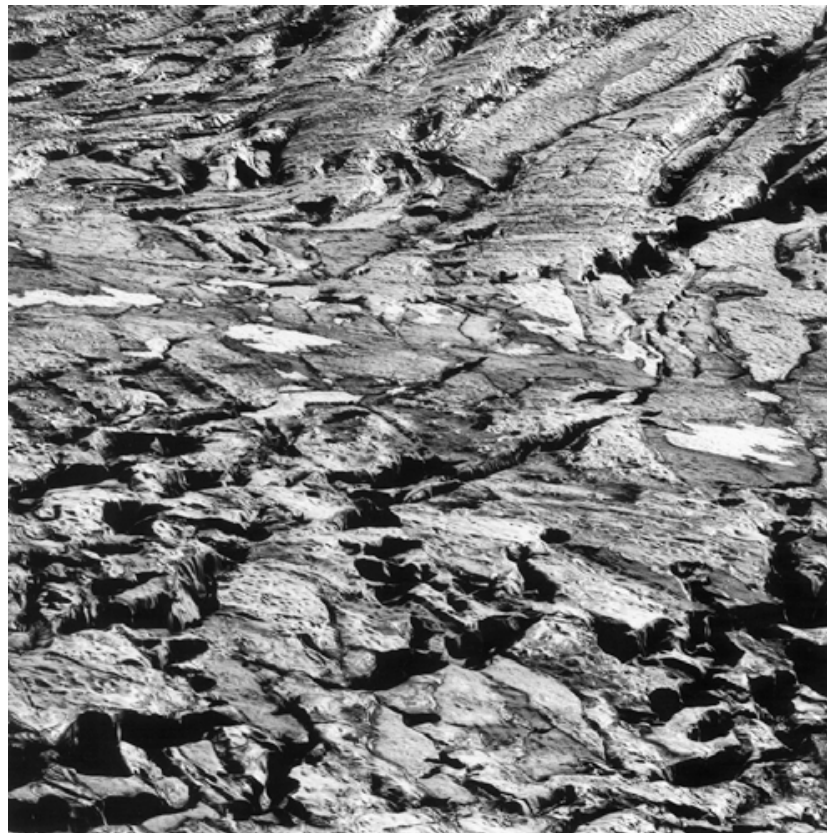
2 b/w photographs, bromide silver gelatin  
image size 26,4 x 25,1 cm / 26,7 x 26,4 cm  
sheet size each 40 x 32,5 cm  
framed size each 52,2 x 42 cm  
Edition of 2 + 1 AP  
Vintage





**Detlef Orlopp**  
4.9.85 / 30.8.82

2 b/w photographs, bromide silver gelatin  
image size 25,8 x 25,6 cm / 25,8 x 25,3 cm  
sheet size each 40 x 32,5 cm  
framed size each 52,2 x 42 cm  
Edition of 2 + 1 AP  
Vintage

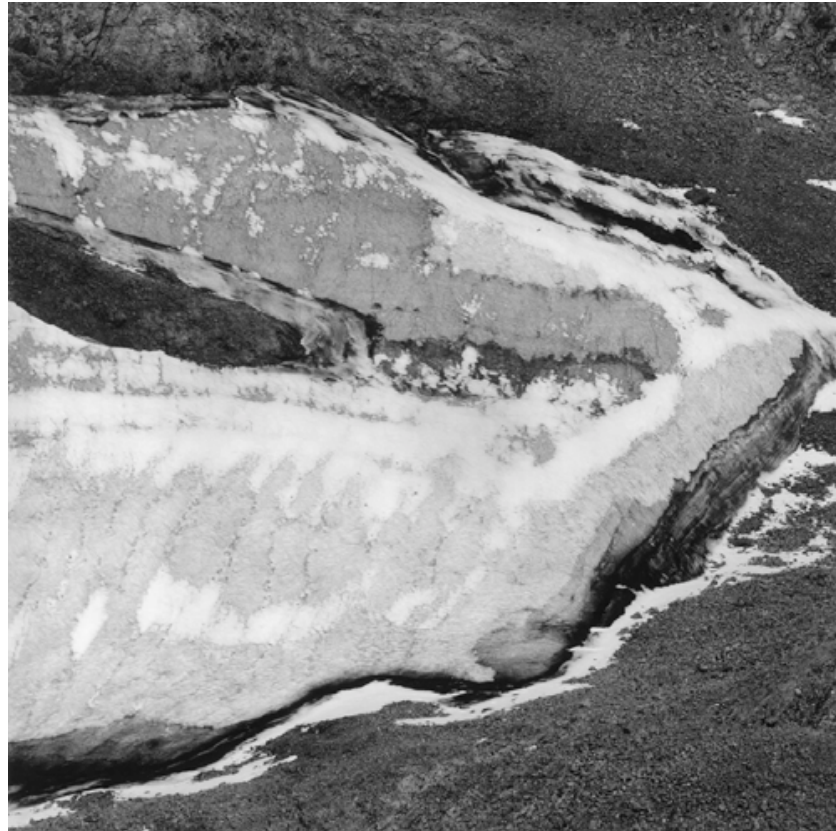
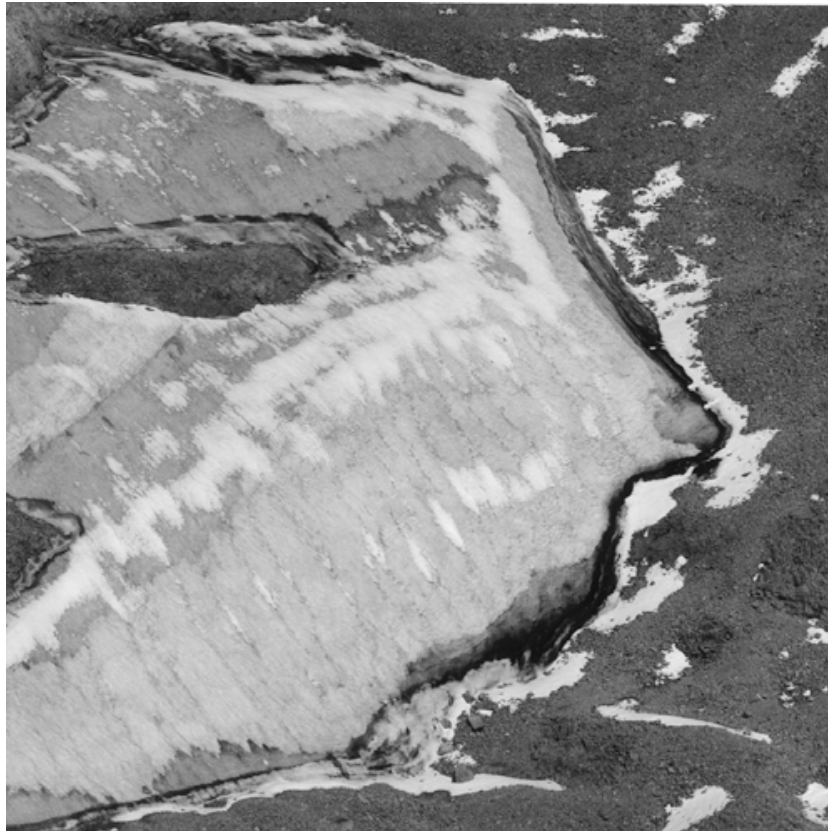


**Detlef Orlopp**  
15.9.82 / 4.9.85

2 b/w photographs, bromide silver gelatin  
image size 25,6 x 25,3 cm / 25,8 x 25,9 cm  
sheet size each 40 x 32,5 cm  
framed size each 52,2 x 42 cm  
Edition of 2 + 1 AP  
Vintage



**Detlef Orlopp**  
**Im Licht des Gletschers**  
Installation view Parrotta Contemporary Art Stuttgart, 2014



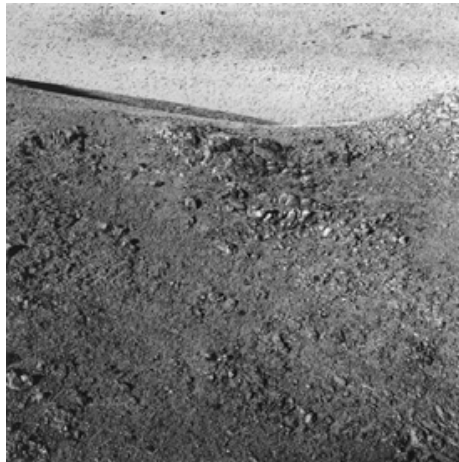
**Detlef Orlopp**  
23.8.82

2 b/w photographs, bromide silver gelatin  
image size each 26 x 25,9 cm  
sheet size each 40 x 32,5 cm  
framed size each 52,2 x 42 cm  
Edition of 2 + 1 AP  
Vintage



**Detlef Orlopp**  
15.9.85

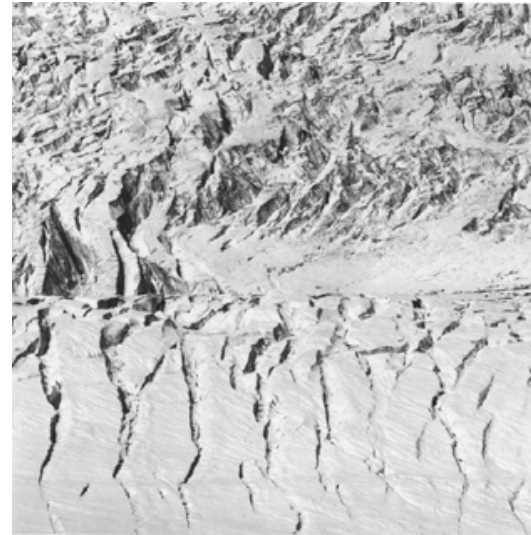
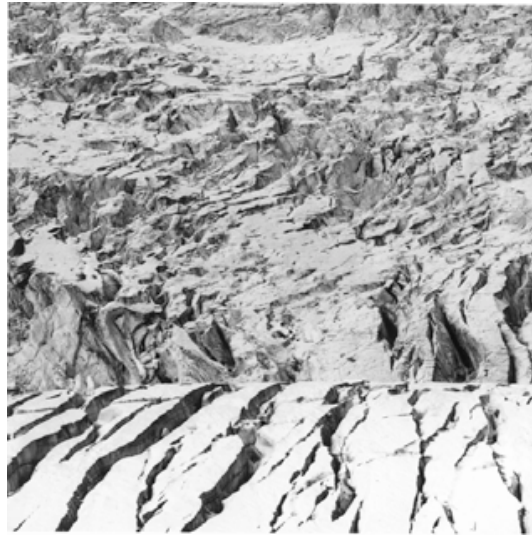
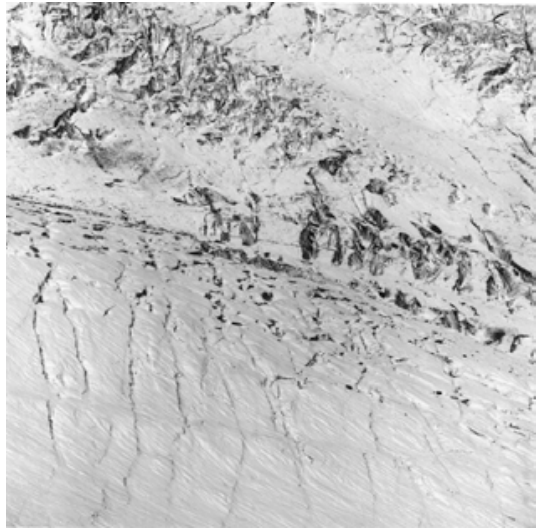
b/w photographs, bromide silver gelatin  
image size 26,5 x 25,7 cm  
sheet size 40 x 32,5 cm  
framed size 52,2 x 42 cm  
Edition of 2 + 1 AP  
Vintage



**Detlef Orlopp**  
3.9.86

4 b/w photographs, bromide silver gelatin  
image size each 26,3 x 26,1 cm  
sheet size each 40 x 32,5 cm  
framed size each 52,2 x 42 cm  
Edition of 2 + 1 AP  
Vintage

**PARROTTA  
CONTEMPORARY  
ART**



**Detlef Orlopp**  
**15.9.85**

6 b/w photographs  
bromide silver gelatin  
image size each 25,8 x 25,8 cm  
sheet size each 40 x 32,5 cm  
framed size each 52,2 x 42 cm  
Edition of 2 + 1 AP  
Vintage



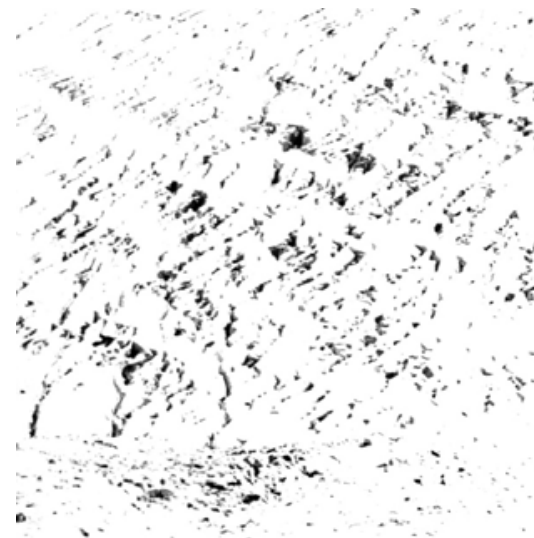
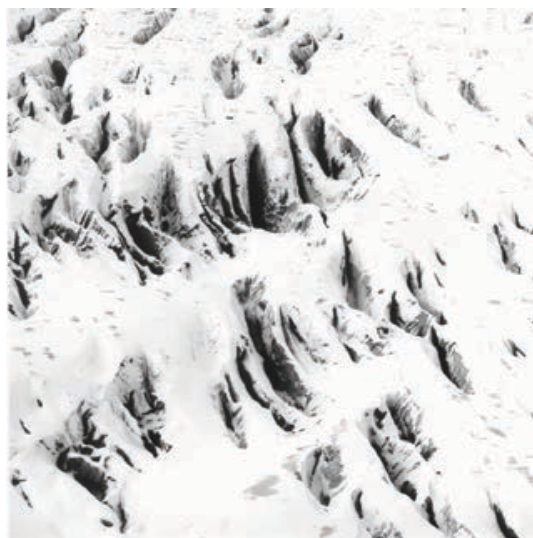
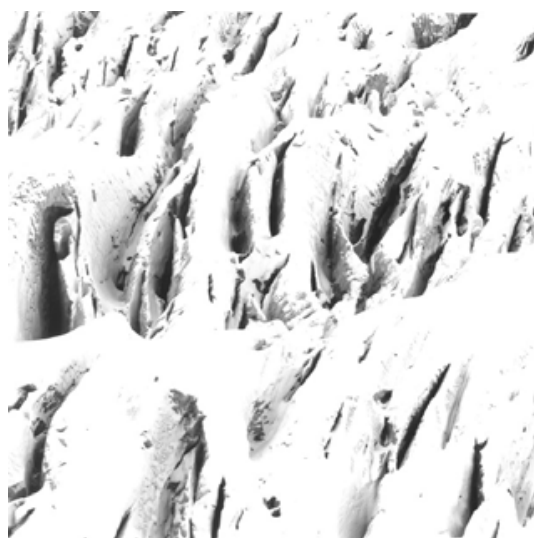
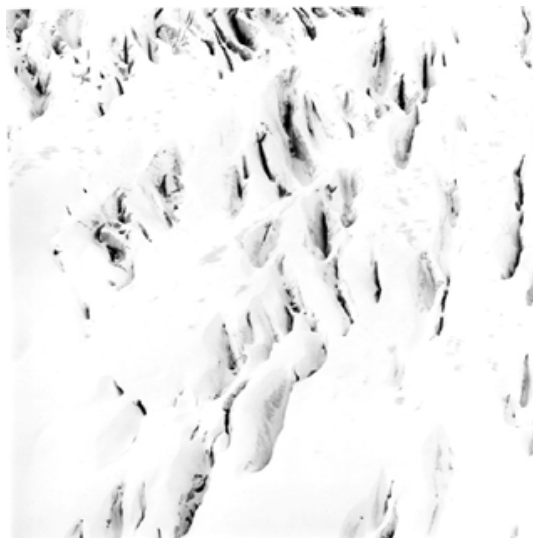
**Detlef Orlopp**

**Im Licht des Gletschers**

Installation view Parrotta Contemporary Art Stuttgart, 2014



**PARROTTA  
CONTEMPORARY  
ART**



**Detlef Orlopp**  
4.9.1983

6 b/w photographs  
bromide silver gelatin  
image size each 25,6 x 25,2 cm  
sheet size each 40 x 32,5 cm  
framed size each 52,2 x 42 cm  
Edition of 2 + 1 AP  
Vintage



**Detlef Orlopp**  
**Max Bense, 26.4.1963**

b/w photograph, bromide silver gelatin  
image size 39,1 x 28,3 cm / 39 x 29,2 cm / 39,4 x 28,9 cm / 39,5 x 29,4 cm  
framed size each 51,6 x 44,2 cm  
Vintage

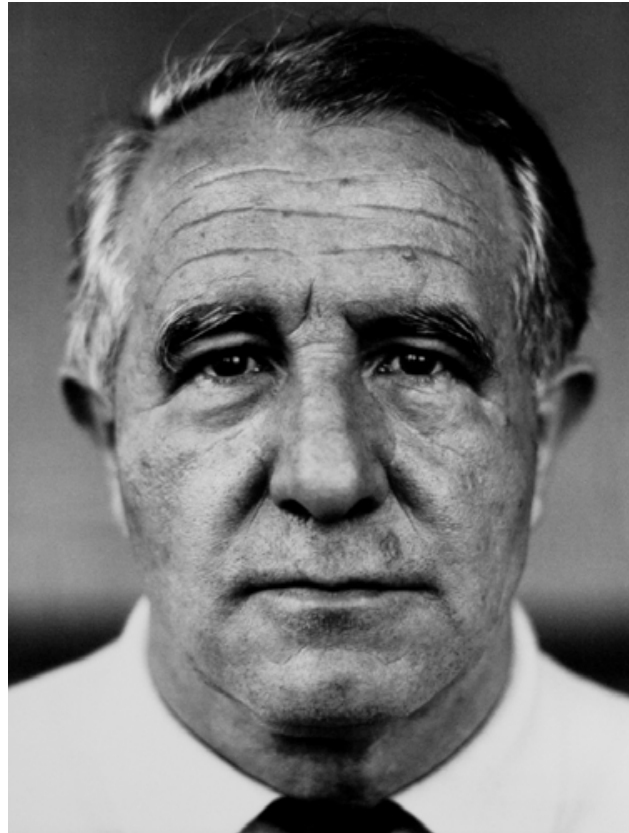
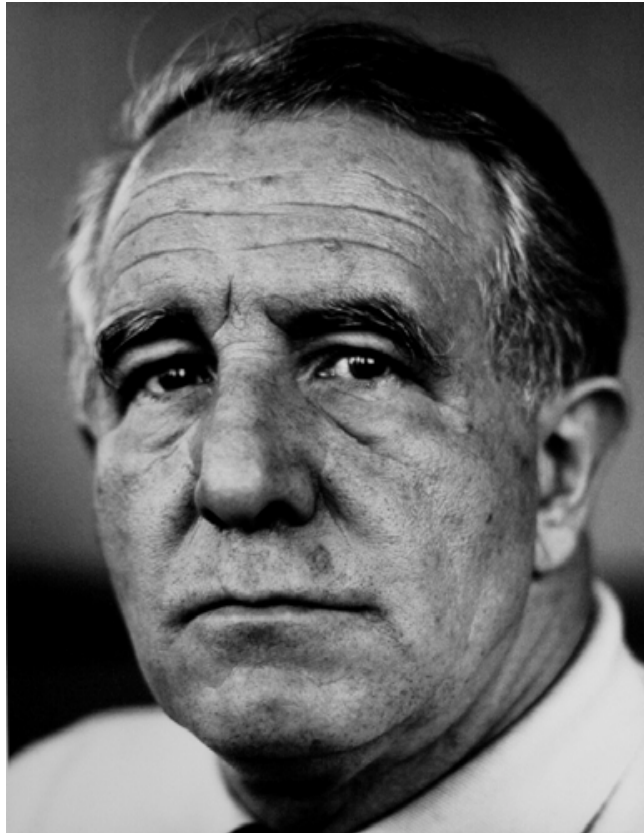


**Detlef Orlopp**  
**Max Bense, 26.4.1963**

b/w photograph, bromide silver gelatin  
image size 38,5 x 26,2 cm  
sheet size each 40 x 32,5 cm  
framed size 51,6 x 44,2 cm  
Vintage

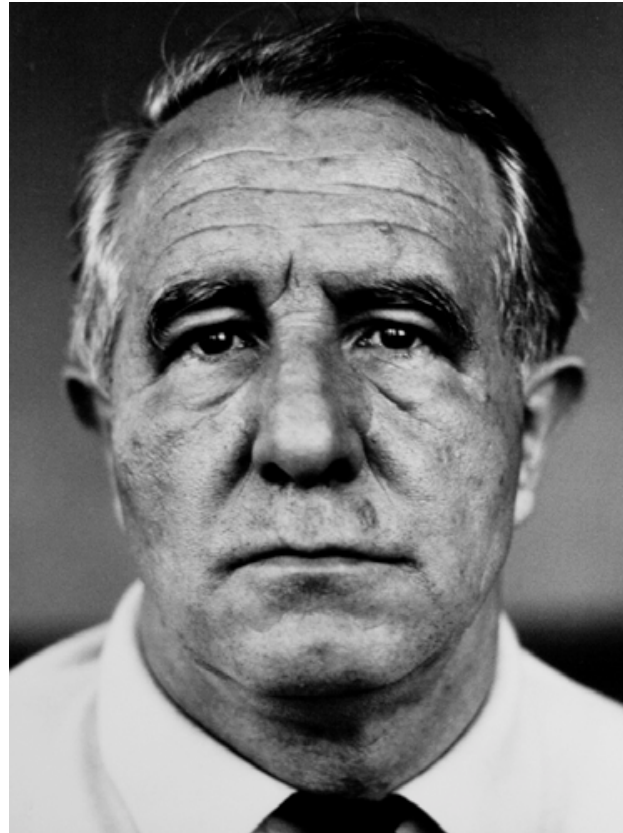
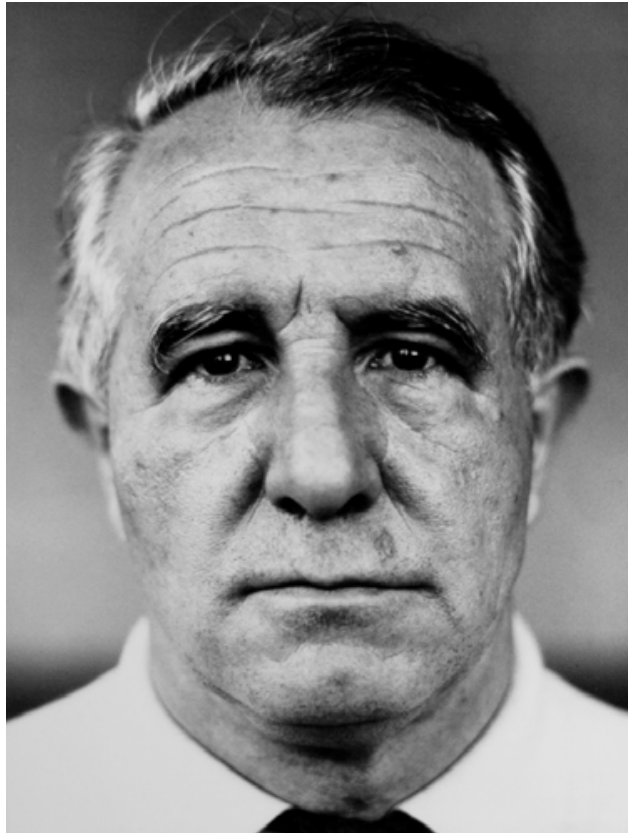


**Detlef Orlopp**  
**Im Licht des Gletschers**  
Installation view Parrotta Contemporary Art Stuttgart, 2014



**Detlef Orlopp**  
**Max Bense, 13.6.67**

b/w photograph, bromide silver gelatin  
image size 38,8 x 29,8 cm / 37,6 x 28,6 cm  
framed size each 51,6 x 44,2 cm  
Vintage



**Detlef Orlopp**  
**Max Bense, 13.6.67**

b/w photograph, bromide silver gelatin  
image size 38,1 x 28,7 cm / 38,6 x 29,3 cm  
framed size each 51,6 x 44,2 cm  
Vintage



**Detlef Orlopp**  
*Dorothea H, 7.2.66 / Karen U, 24.6.72*

b/w photograph, bromide silver gelatin  
image size 37,7 x 28,7 cm / 35,6 x 29,7cm  
framed size each 61,6 x 44,2 cm  
Vintage